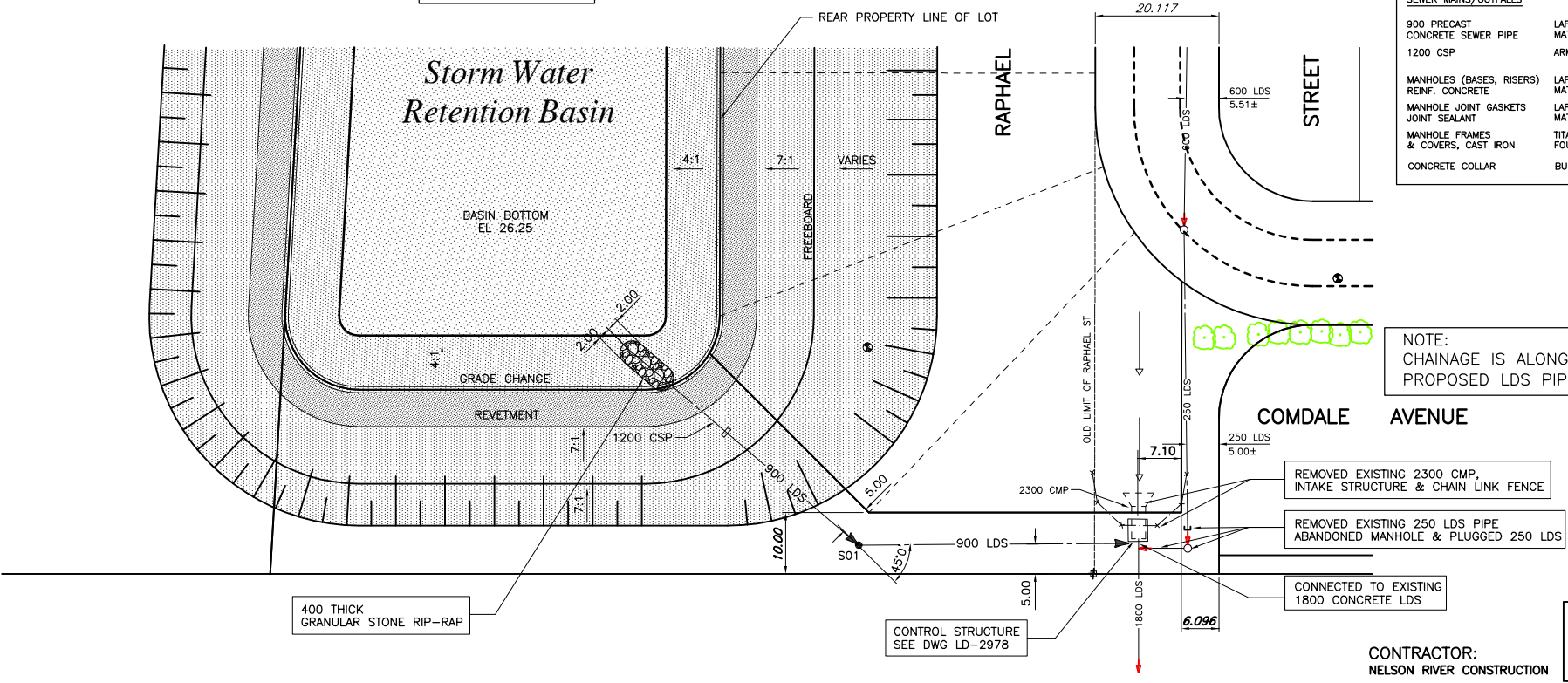


SEE DRAWING LD-2974 FOR BASIN DETAIL



MATERIAL LIST		
PRODUCT/MATERIAL:	MANUFACTURER:	MODEL:
SEWER MAINS/OUTFALLS		
900 PRECAST CONCRETE SEWER PIPE	LAFARGE CON'ST MATERIALS INC.	ASTM C76 CL IV
1200 CSP	ARMTEC	STEEL TYPE 2 WALL 2.8mm
MANHOLES (BASES, RISERS) REINF. CONCRETE	LAFARGE CON'ST MATERIALS INC.	ASTM C-76
MANHOLE JOINT GASKETS	LAFARGE CON'ST MATERIALS INC.	KENT SEAL No. 2
MANHOLE FRAMES & COVERS, CAST IRON	TITAN FOUNDRY LTD.	SOLID TF-101-9
CONCRETE COLLAR	BUILDING PRODUCTS	

- CONSTRUCTION NOTES:**
1. ALL CATCHBASIN'S ARE AS PER SD-025 UNLESS OTHERWISE NOTED.
 2. ALL CATCHBASIN LEADS ARE 250mm AT A MINIMUM 1.5% UNLESS OTHERWISE NOTED.
 3. ALL PAVEMENT DIMENSIONS ARE TO BACK OF CURB.
 4. ALL PIPE BACKFILL UNDER BOULEVARD IS CLASS 4 UNLESS OTHERWISE NOTED.
 5. ALL PIPE UNDER EXISTING OR FUTURE PAVEMENT IS CORED.
 6. ALL SEWER PIPE IS C76 CL III UNLESS OTHERWISE NOTED.

RECORD DRAWING	
DATE Y/M/D	10.09.01
DRAFTED BY	G.E.L.
FIELD INFO BY	B.B.
CHECKED BY	G.M.D./S.E.H.

DATE OF SUBSTANTIAL PERFORMANCE:
MARCH 30, 2004

CONSTRUCTION PERIOD:
FEBRUARY 2004 TO MARCH 2004

CONTRACTOR:
NELSON RIVER CONSTRUCTION



150 WM	WATERMAIN	150 WM	4"	BEND	4"	ANCHOR
400 FM	FEEDERMAIN	400 FM	4"	TEE	4"	TREE
300 LDS	LAND DRAINAGE SEWER	300 LDS	4"	CURB STOP	15.240	LEGAL DIMENSION
250 WWS	WASTEWATER SEWER	250 WWS	4"	PLUG	4"	SURVEY BAR
300 CS	COMBINED SEWER	300 CS	4"	MANHOLE	4"	TRAFFIC SIGNAL
200 FCM	FORCEMAIN	200 FCM	4"	CATCHBASIN	4"	GAS
4"	JUNCTIONS	4"	4"	CURB INLET	4"	HYDRO
4"	HYDRANT	4"	4"	ADDRESS	4"	MTS
4"	VALVE	4"	4"	HYDRO POLE	4"	SIDEWALK
4"	REDUCER	4"	4"	LIGHT STANDARD	4"	CURB
EXISTING	LEGEND-PLAN	PROPOSED	EXISTING	LEGEND-PLAN	PROPOSED	EXISTING
EXISTING	LEGEND-PLAN	PROPOSED	EXISTING	LEGEND-PLAN	PROPOSED	EXISTING

LOCATION APPROVED UNDERGROUND STRUCTURES			
SUPV.	U/G STRUCTURES	DATE	COMMITTEE

NOTE: LOCATION OF UNDERGROUND STRUCTURES AS SHOWN ARE BASED ON THE BEST INFORMATION AVAILABLE. BUT NO GUARANTEE IS GIVEN THAT ALL EXISTING UTILITIES ARE SHOWN OR THAT THE GIVEN LOCATIONS ARE EXACT. CONFIRMATION OF EXISTENCE AND EXACT LOCATION OF ALL SERVICES MUST BE OBTAINED FROM THE INDIVIDUAL UTILITIES BEFORE PROCEEDING WITH CONSTRUCTION.

B.M. CITY OF WINNIPEG 82-020 ELEV. 232.892m			
NO.	REVISIONS	DATE	BY
2	REVISED TO RECORD DRAWING	10.09.01	GWC
1	ISSUED FOR CONSTRUCTION	04.01.26	SH
0	ISSUED FOR TENDER	03.12.09	SH
-	ISSUED FOR APPROVAL	03.12.09	SH

DESIGNED BY SEH		CHECKED BY	
DRAWN BY GMD		APPROVED BY	
HOR. SCALE: 1 : 500		RELEASED FOR CONSTRUCTION	
VERTICAL: 1 : 50		DATE	

ORIGINAL DRAWING REVISION "01" SEALED BY S.E. HARNISH P. ENG 2004.01.26

CONSULTANT DRAWING NO. 0312940900-DWG-C0004-02

THE CITY OF WINNIPEG
PLANNING, PROPERTY & DEVELOPMENT DEPARTMENT

FAIRFIELD PARK LOCAL IMPROVEMENT DISTRICT
STORMWATER RETENTION BASIN EXCAVATION, OUTFALLS & ASSOCIATED WORKS

CITY DRAWING NUMBER: LD-2977
SHEET 4 OF 7

CITY DRAWING NUMBER: C0004

OUTLET PIPE FOR STORM WATER RETENTION BASIN (LAKE 6-29) 45m SOUTH OF COMDALE AVENUE